

# MONTHLY MEMBERSHIP PROGRESS REPORT

LOCATION INDIA

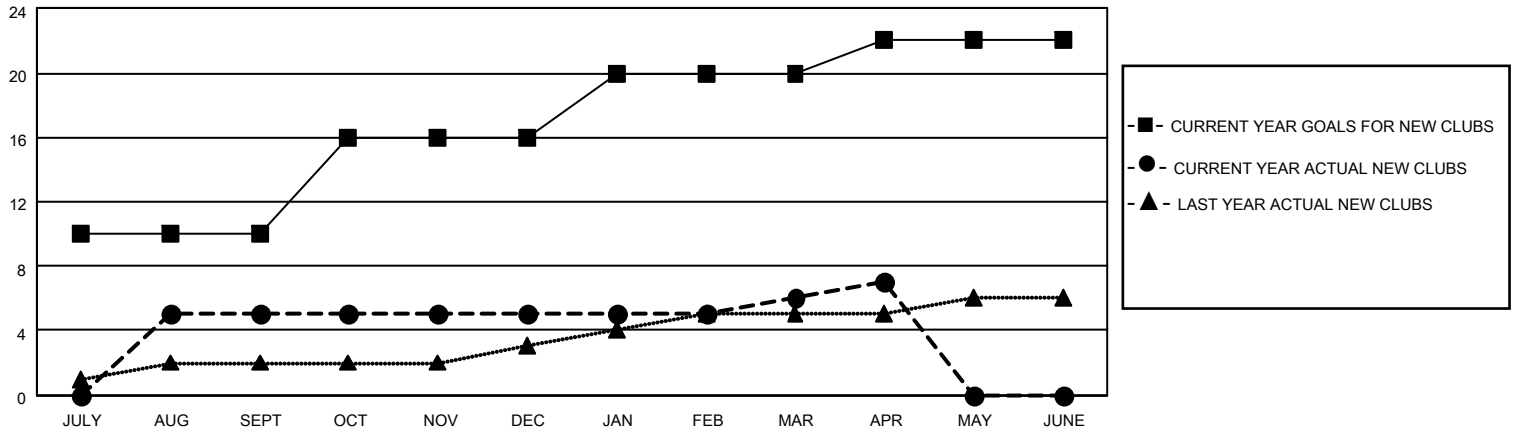
District 318 B

Results as of: 4/30/2023

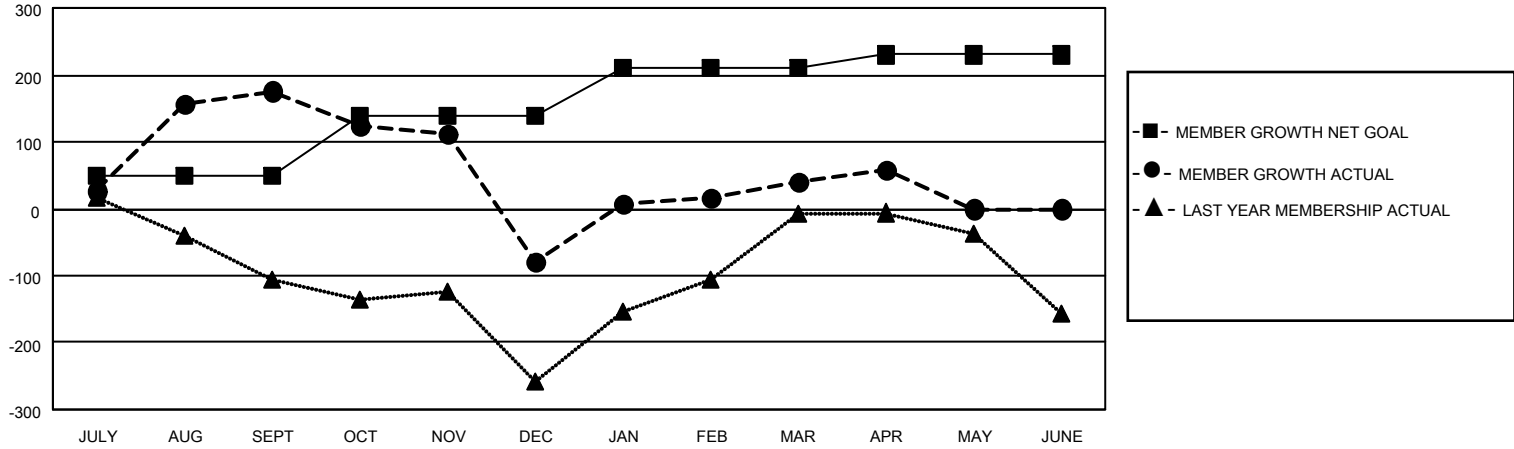
Clubs			
RESULTS FOR 2022-2023			
QUARTER	NEW CLUB GOAL	NEW CLUBS	DROPPED CLUBS
JULY/AUG/SEPT	10	5	0
OCT/NOV/DEC	6	0	6
JAN/FEB/MAR	4	1	0
APR/MAY/JUNE	2	1	0

Members			
RESULTS FOR 2022-2023			
QUARTER	MEMBER GROWTH NET GOAL	MEMBER GROWTH ACTUAL	DROPPED MEMBERS ACTUAL (including transfers)
JULY/AUG/SEPT	50	215	28
OCT/NOV/DEC	90	83	327
JAN/FEB/MAR	70	179	50
APR/MAY/JUNE	20	25	8

**GOALS AND ACTUAL NEW CLUBS CUMULATIVE**



**GOALS AND ACTUAL MEMBERS CUMULATIVE**



**DROPPED CLUBS: 6**

**67 CLUBS OF 130 ADDED 1 OR MORE NEW MEMBERS**

**GENDER DISTRIBUTION**

MALE	3,174 (85.53%)
FEMALE	537 (14.47%)
NON BINARY	0 (0.00%)
PREFER NOT TO ANSWER	0 (0.00%)

**DROPPED MEMBERS**

[CLICK HERE FOR CUMULATIVE MEMBERSHIP DATA](#)

DECEASED	22
CLUB CANCELLED	104
OTHER	287
<b>TOTAL</b>	<b>413</b>

TOTAL FAMILY UNIT MEMBERS	896
FAMILY MEMBERS PAYING HALF DUES	467